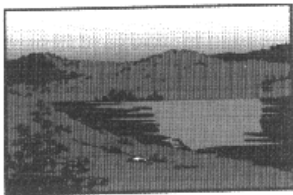
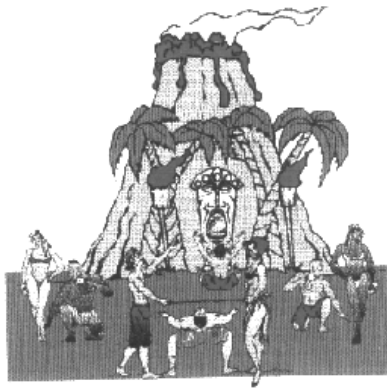
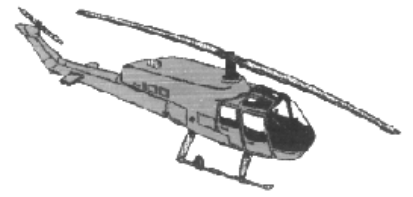
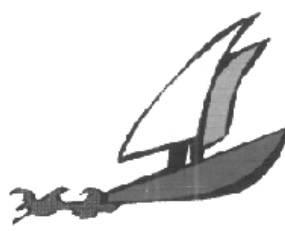
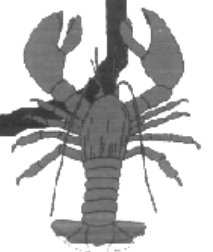


Outline Map



DRUG
FREE
SCHOOL
ZONE



▶ Lesson plan

Time 40-50 minutes

Level Intermediate

Materials Outline Map

Aim To talk about environmental problems and solutions using passive tenses and infinitive clauses.

1. Handout the outline maps and dictate a "place" for the map ie. "There is a hospital on the west of the volcano". Make sure everyone draws this on the map. Next get every student to dictate a new place for the map. So if you have 20 students you will get 20 new locations. Alternatively, dictate a list of places yourself.

Possible places might include:

waterfalls
a factory
fishing boat
pub
school etc.

2. Now is a nice time to brainstorm threats to the environment. These might be drawn from the map ie. "What is the threat to the waterfall?" ...or "to the fish?" or "to the health of the children?". Table these on the board.

3. Elicit or introduce verbs that might be used with to describe and explain the threats to the environment.

VERBS:

THREATEN, ENDANGER
DAMAGE, CUT DOWN
DESTROY, WIPE OUT
REDUCE, INCREASE
POLLUTE, CONTAMINATE

4. Model some active and passive sentences. ie. "The golf courses threaten the forests". "The forests are being threatened by golf courses". (CONTINUOUS OR PERFECT PASSIVES ARE SUITABLE)
Next put the students in pairs and get them to drill active and passive sentences for talking about the environment.

▶ Lesson plan

Time 40-50 minutes

Level Intermediate

Materials Outline Map

Aim To talk about environmental problems and solutions using passive tenses and infinitive clauses.

5. Now get the students to pass their maps to the next student on their right. When they have all received a new map tell them to write 10 problems on the map in note form (not full sentences).

Possible problems might include:

waterfalls- contaminated by waste water

a factory-hearing of workers damaged

fishing boat-fish stocks reduced due to hi-tech fishing

pub- health of people damaged by alcohol

school etc.

6. After this elicit some suggestions for solutions "What could be done about the fishing problem?"
"What should be done to help to improve connditions for the workers?"

3. Write some sentence (ABOUT 5) beginnings re social and environmental problems on the on the board .

SUGGGESTIONS:

ONE WAY TO HELP THE HEARING OF WORKERS IS TO.....

I THINK A GOOD WAY TO STOP THE CONTAMINATION.....

THE PROBLEM OF ALCOHOLISM COULD BE AVOIDED BY.....

Get the students to complete the sentences with their own ideas (using gerunds and infinitives).

Then get them in groups of 3 or 4 comparing their sentences and agreeing and disagreeeing with each other.

4. Finally stick all the maps around the walls and put students in pairs to walk around freely pinpointing problems and suggesting solutions.

A: Oh, look the beach is being destroyed by oil from ships. What can we do??

B: One thing to do is to ban the ships from coming close to the beach.